

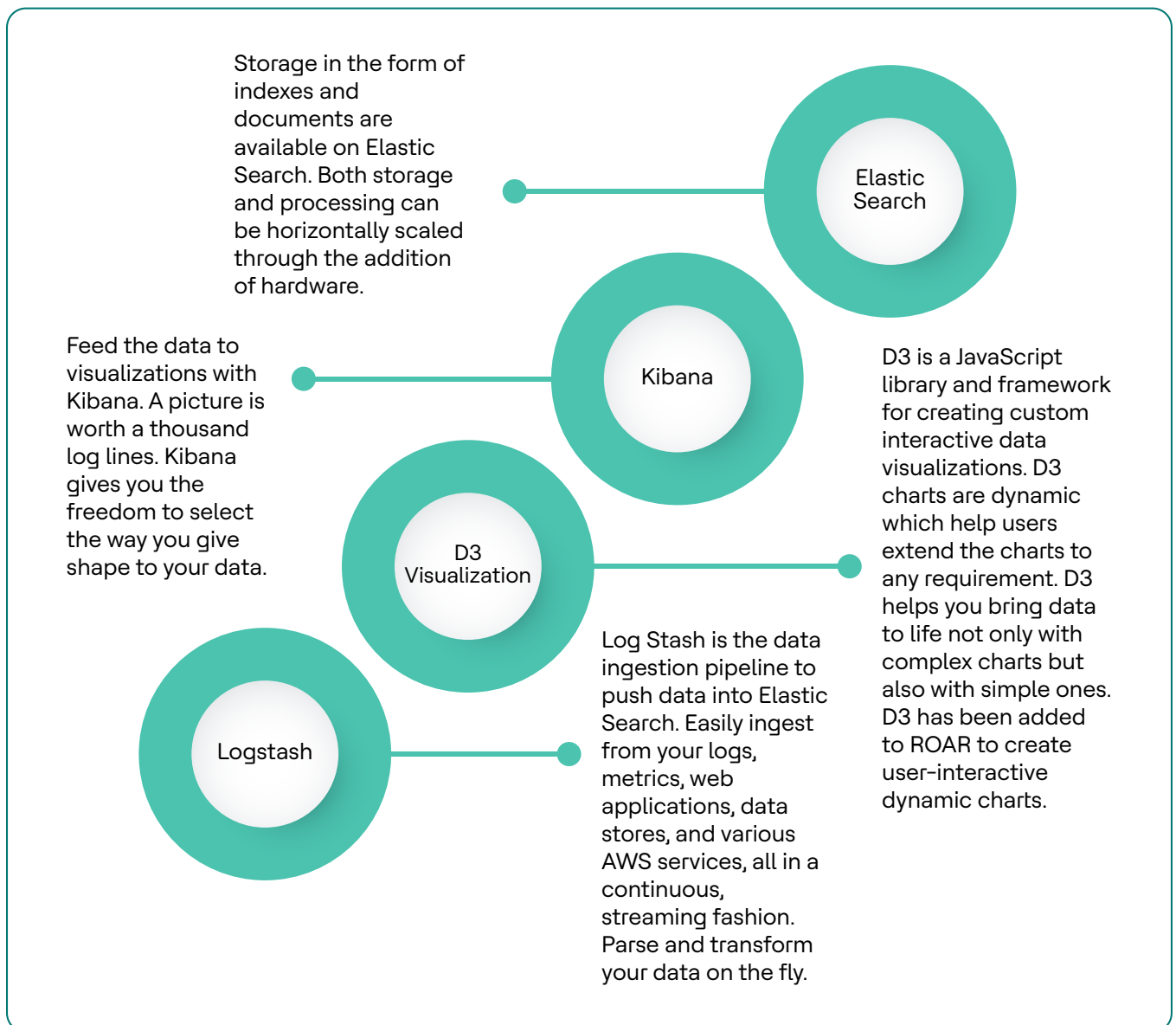
# HCLTech's **ADvantage™** Pega ROAR

Infusing Pega platform  
foundation and data insights  
for supercharged OpEx



# HCLTech's ADvantage™ Pega – ROAR

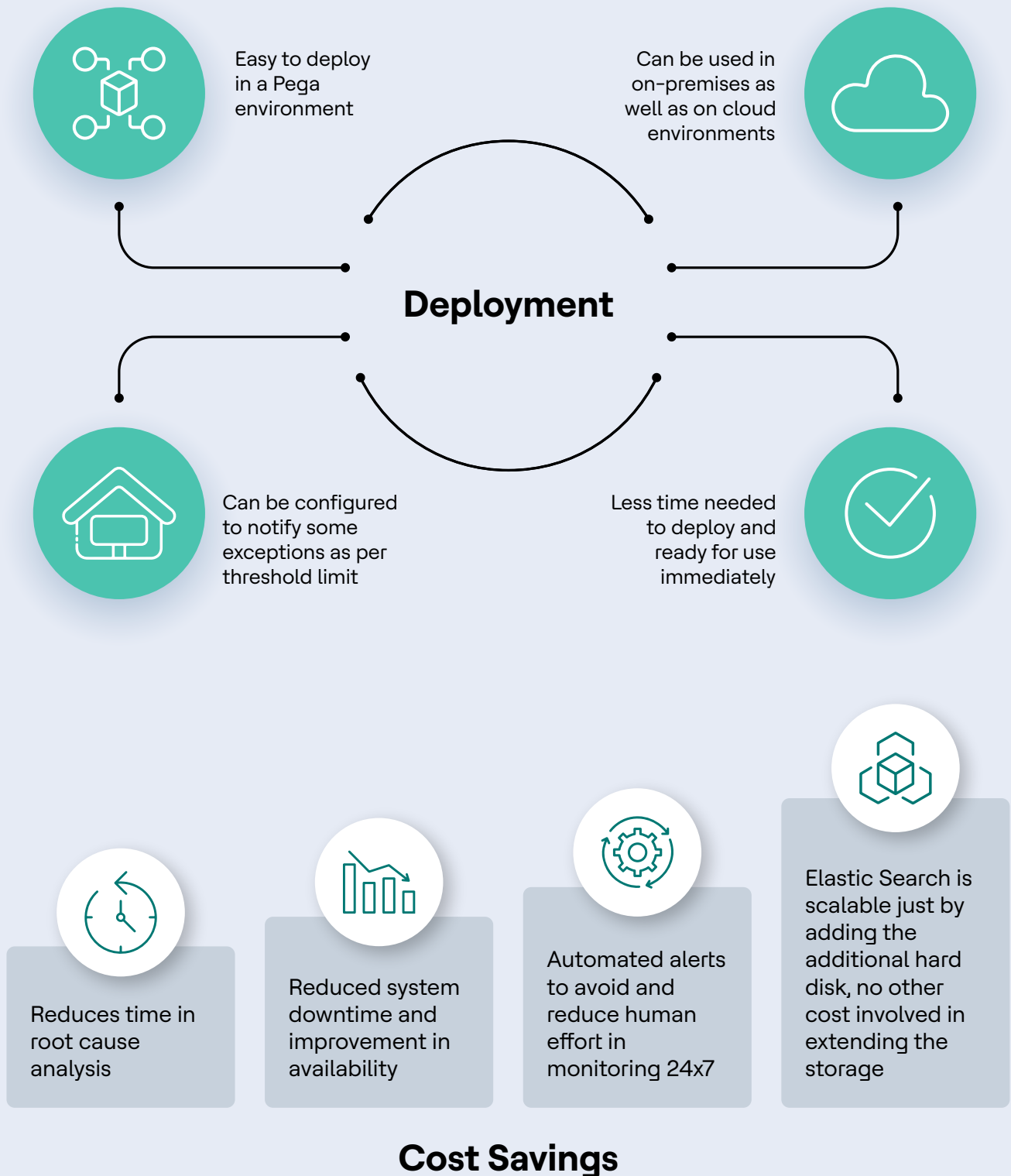
Real-time Operation and Analytics Reporting] framework provides an ELK-based real-time view for transactional volumes that are summarized by service, operation, and partner etc. The ROAR framework presents real-time cutting-edge monitoring, thus, allowing teams to move from a manual to an automated supervision. The automated process enables teams to focus on preventive and proactive techniques of monitoring over the reactive ones. One of the major advantages of HCLTech's ADvantage™ Pega ROAR platform is that it is compatible with 7.x and 8.x Pega platforms, both on premises and on cloud.

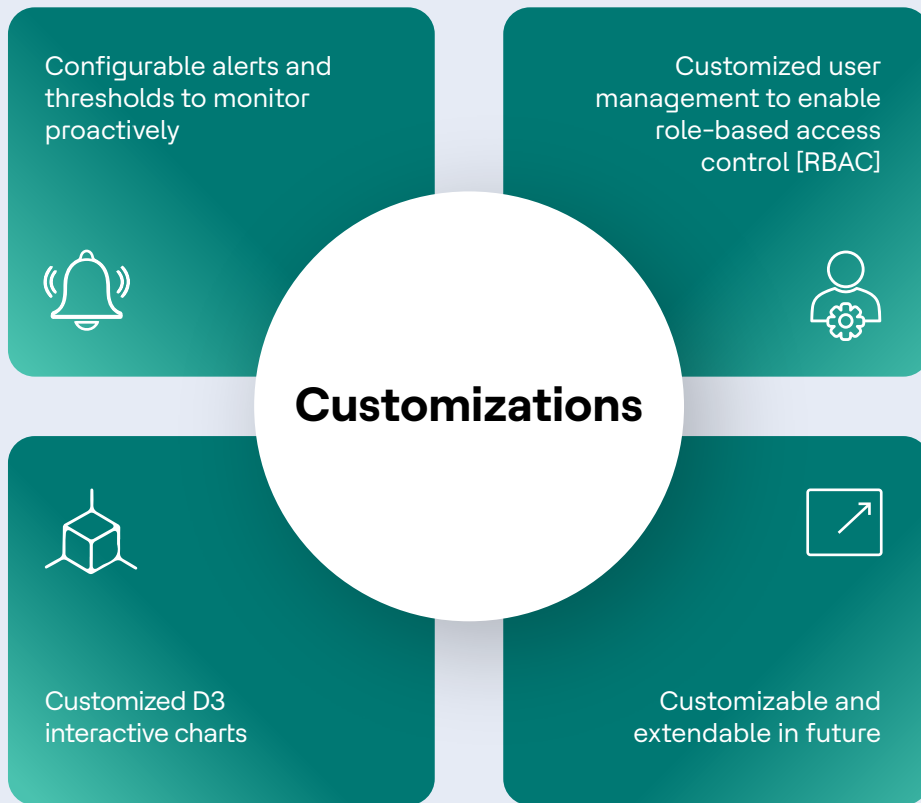


# Solution Approach

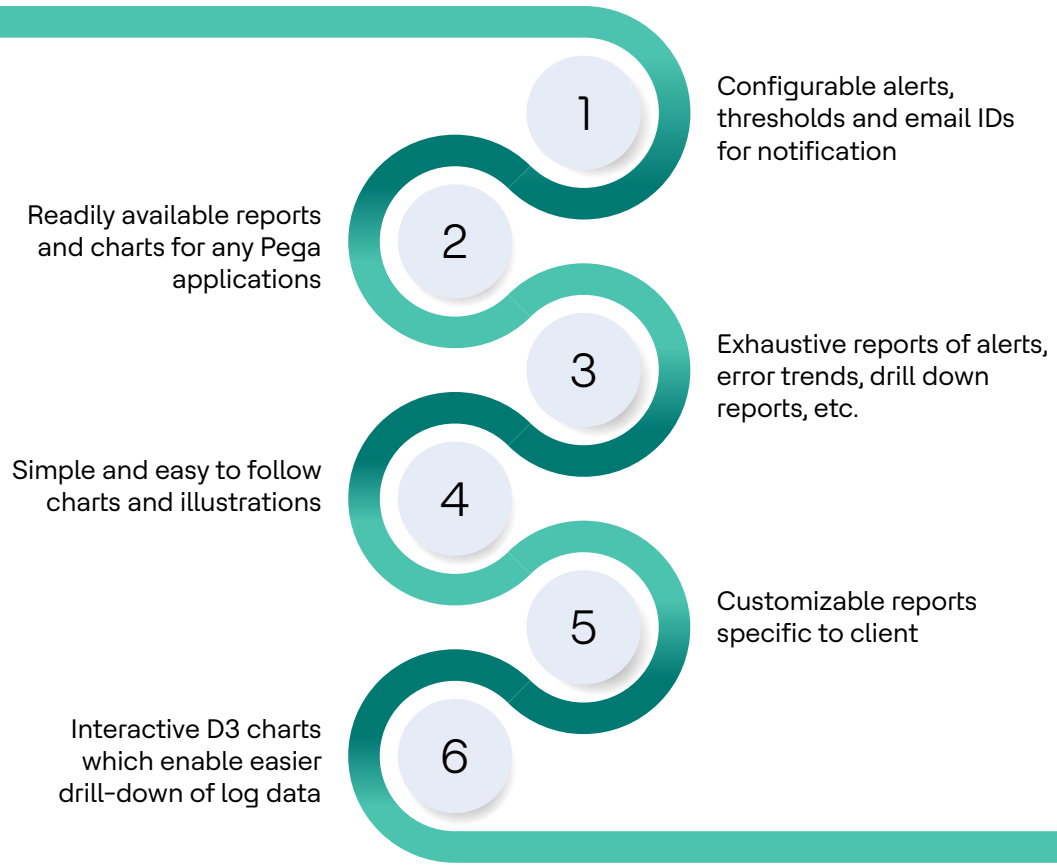
HCLTech's ADvantage™ Pega – ROAR framework is designed to simplify the data processing and integration. Teams can easily plug in with multiple Pega portals to monitor the Pega logs. The accurate and standardized data representation allows teams to access the real-time data in line with Pega's industry requirements.

The ROAR platform also helps organizations with a multi-faceted approach, thus, providing benefits in deployment, cost savings, and customizations. Some of these benefits include:



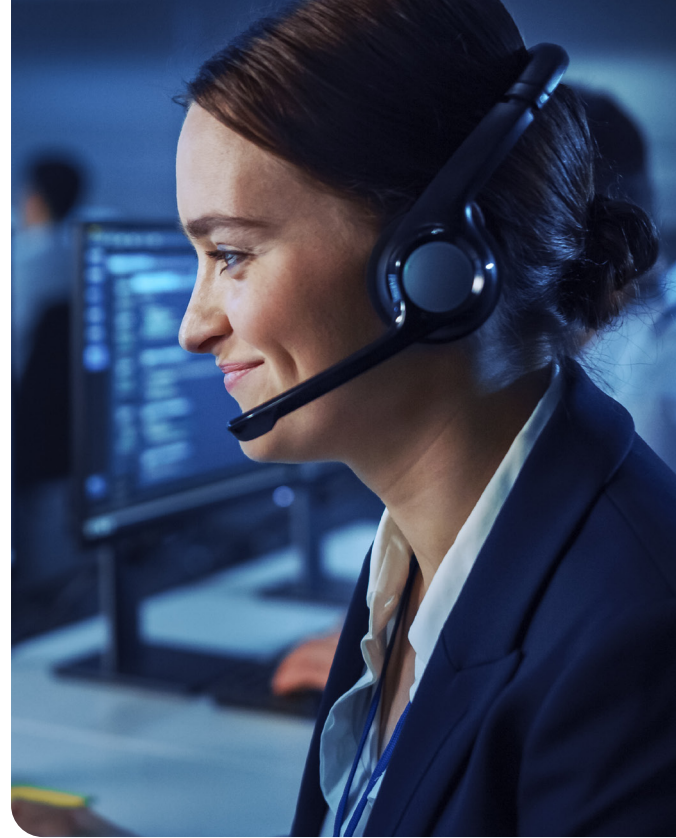


## Key Features

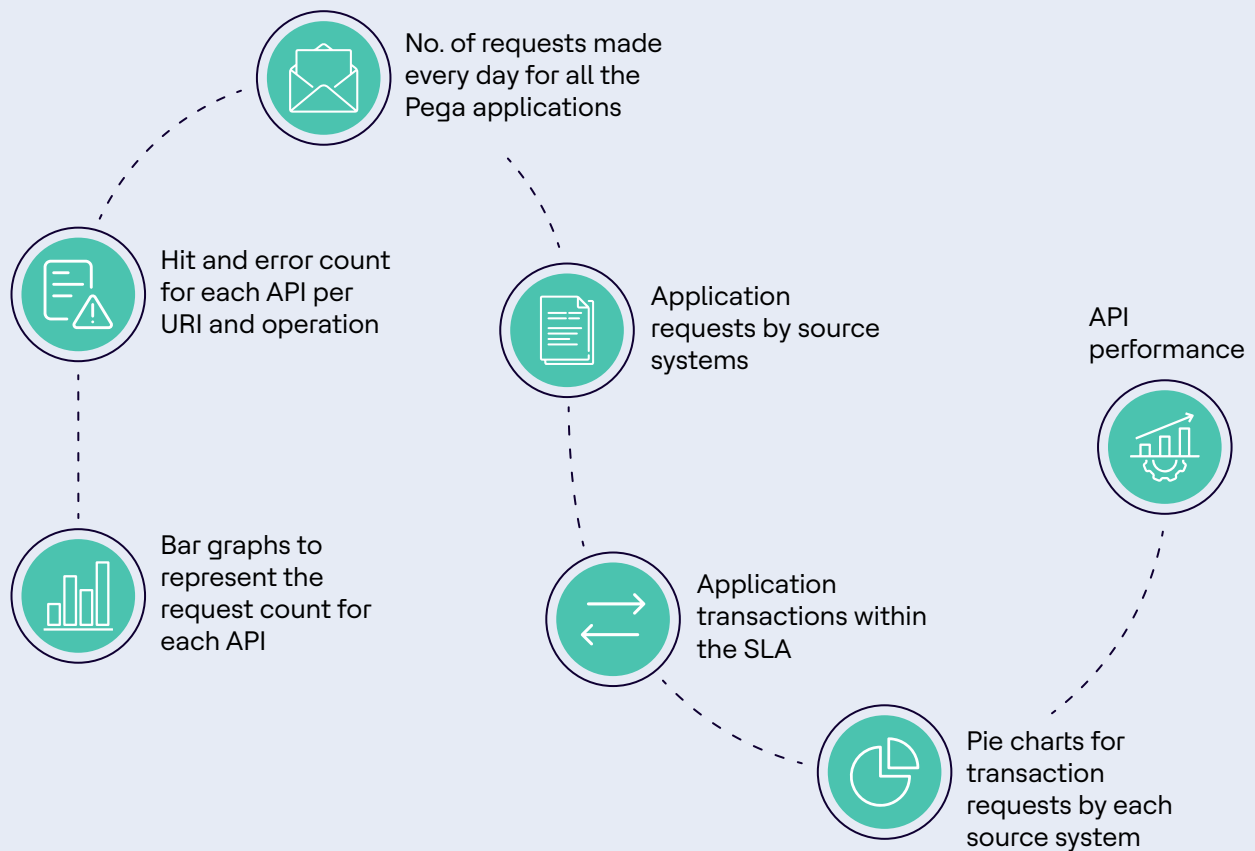


Configuring the platform is a simplified process giving the teams options to:

- ➔ Configure email IDs so that the real-time notifications will be seamlessly delivered
- ➔ Set the thresholds for the log data to know about exceptions or errors through notifications
- ➔ Configure user management for access-based dashboards
- ➔ Support alerting and notifications via a custom plugin for Kibana developed by HCLTech
- ➔ Configure to send alerts via WhatsApp and SMS

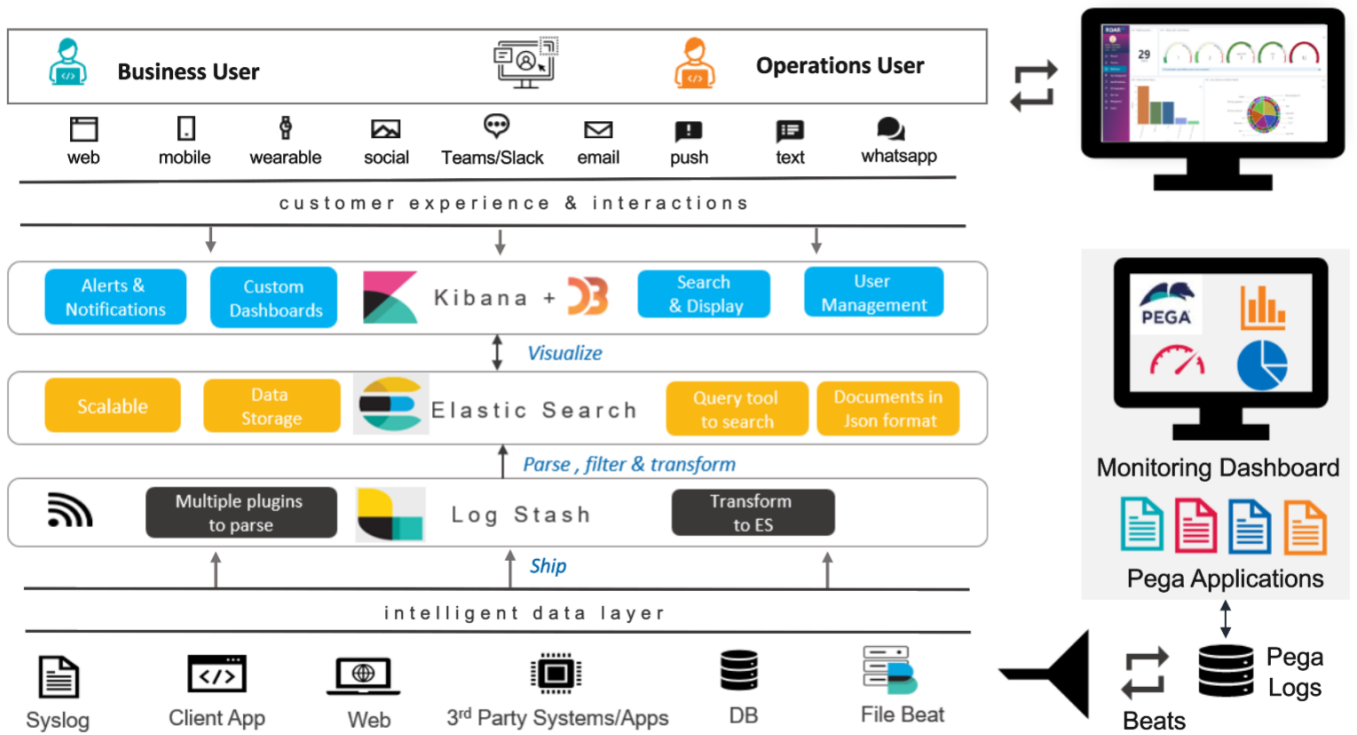


While the dashboard and reporting showcases information in the form of:



**ROAR also has D3 charts which are more advanced and interactive charts. They provide a better view of the log data.**

# Reference Architecture



## Solution Benefits

Real-time operational reporting and analytics help customers in their analysis of the data ingestion and reports

A customized user management plugin from HCLTech

No restriction on the amount of transactional data in the ingestion pipeline that can be stored, searched, and analyzed, both storage and processing can be horizontally scaled through the addition of hardware

Modern JavaScript-based components that provide intuitive visualization

Responsive design that works well on all form factors

# HCLTech | Supercharging Progress™

HCLTech is a global technology company, home to 211,000+ people across 52 countries, delivering industry-leading capabilities centered around Digital, Engineering and Cloud powered by a broad portfolio of technology services and software. The company generated consolidated revenues of \$11.79 billion over the 12 months ended June 30, 2022. To learn how we can supercharge progress for you, visit [hcltech.com](https://hcltech.com).

[hcltech.com](https://hcltech.com)

